



數位攝影色彩管理

光源

自然光—陽光充足:不同時段,色溫不同
陰天,月光

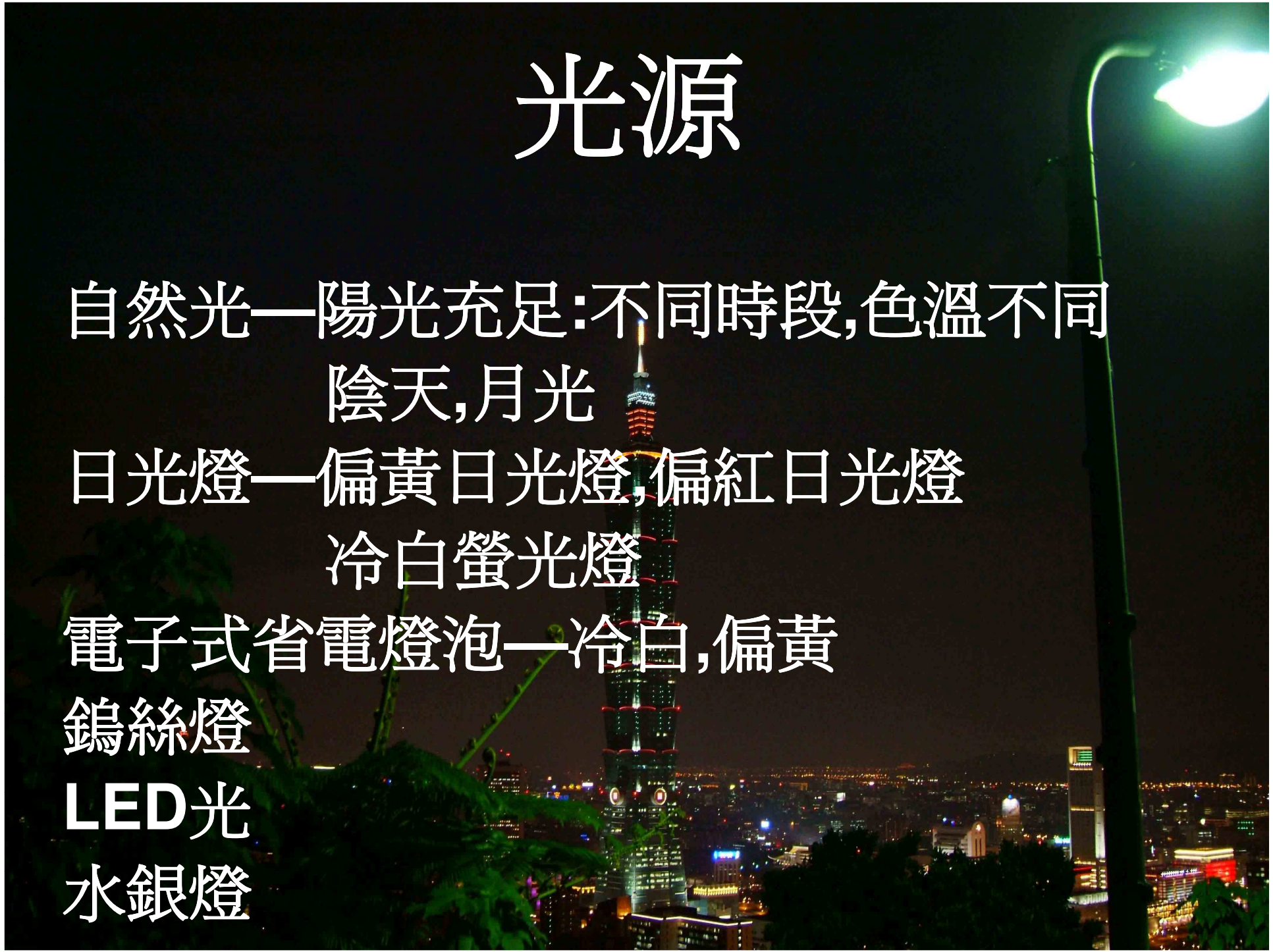
日光燈—偏黃日光燈,偏紅日光燈
冷白螢光燈

電子式省電燈泡—冷白,偏黃

鎢絲燈

LED光

水銀燈



攝影棚之光源

太陽光

鎢絲燈

HMI

閃光燈

高頻冷光燈

電子燈泡

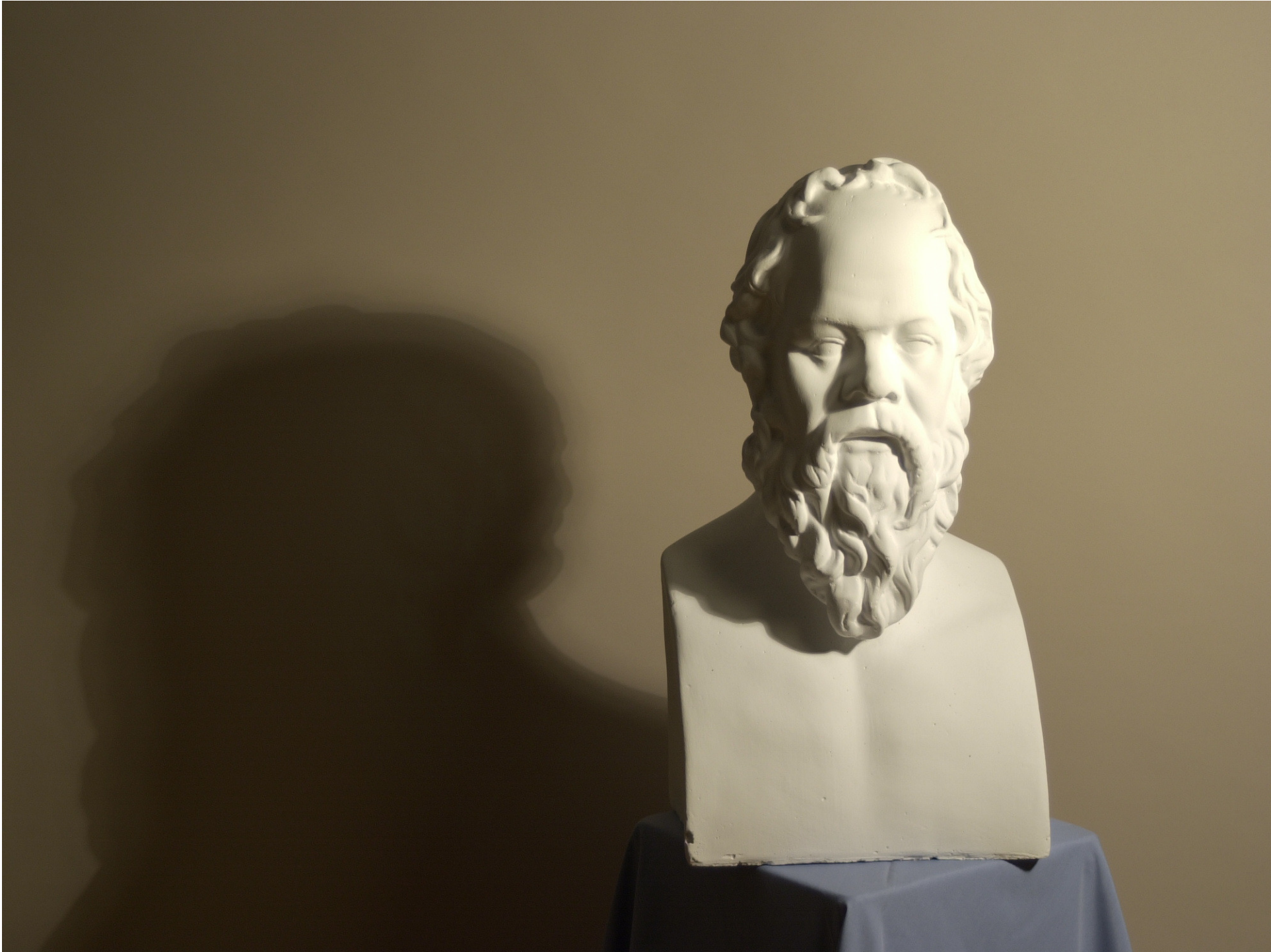


不同光質與被攝體之質感表現

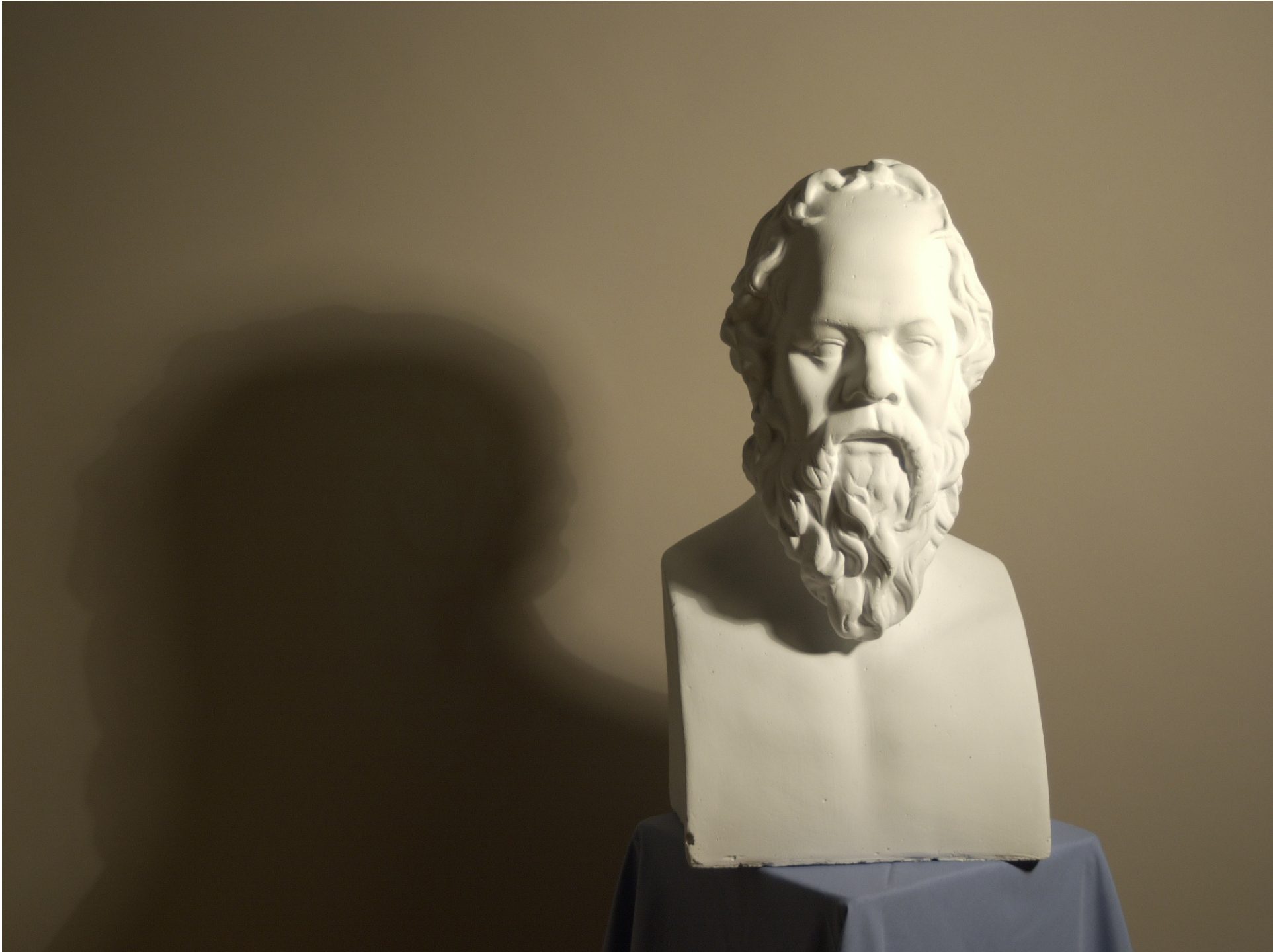
A nighttime photograph of a cityscape, featuring the Taipei 101 tower as the central focus. The tower is illuminated with red and green lights, and its spire is lit with a golden glow. The background shows a dark sky with some clouds and other city buildings with lights. The overall scene is a dense urban environment at night.

- 標準罩
- 廣角罩
- 窄角罩
- 集光罩
- 銀傘
- 白傘
- 自製四方罩
- 大圓罩
- Fresnel Spot
- 小四方罩
- 自製四方罩
- 蜂巢 (Grid)
- 描圖紙
- 傘 + 描圖紙
- Mini Spot

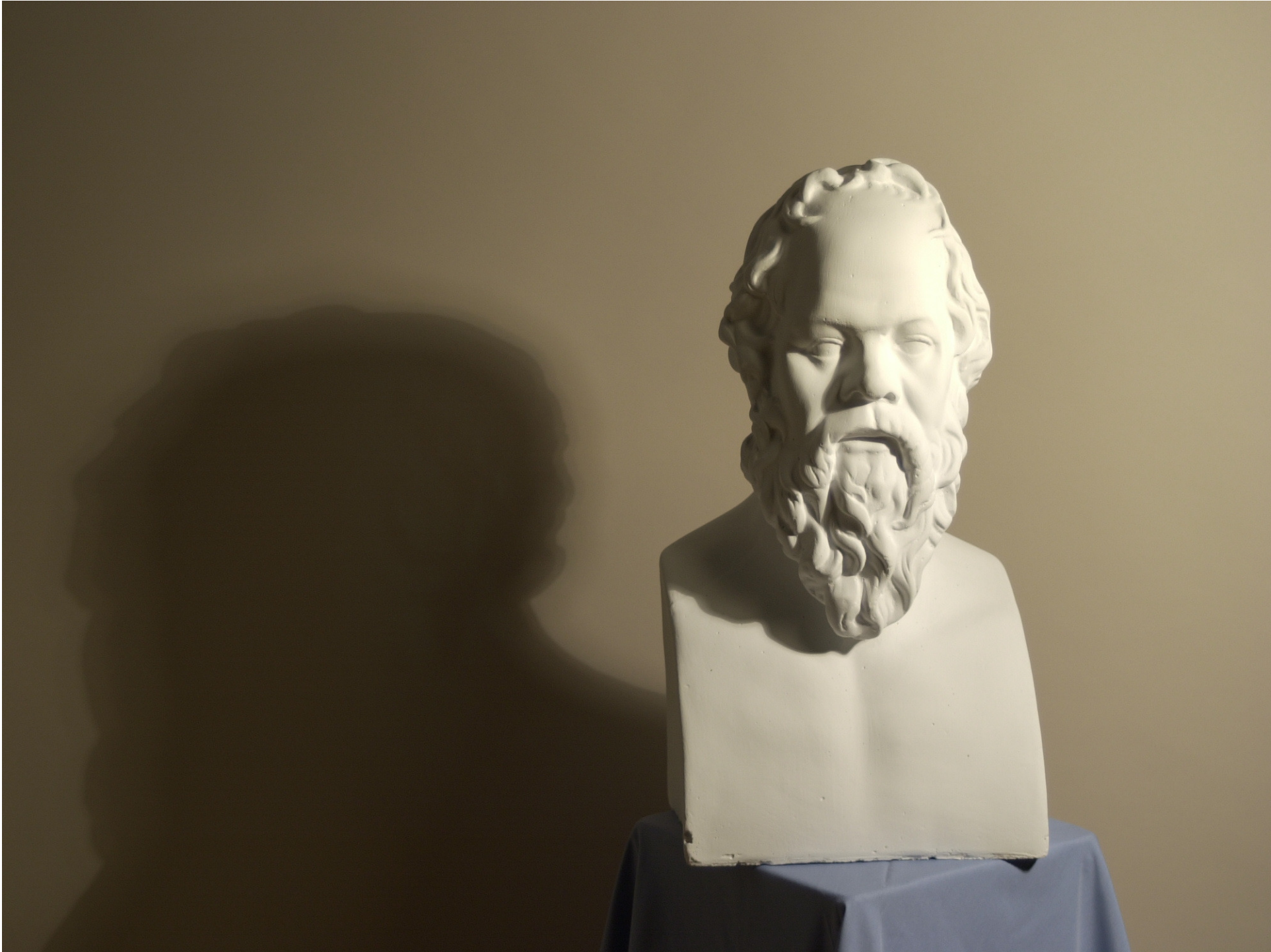




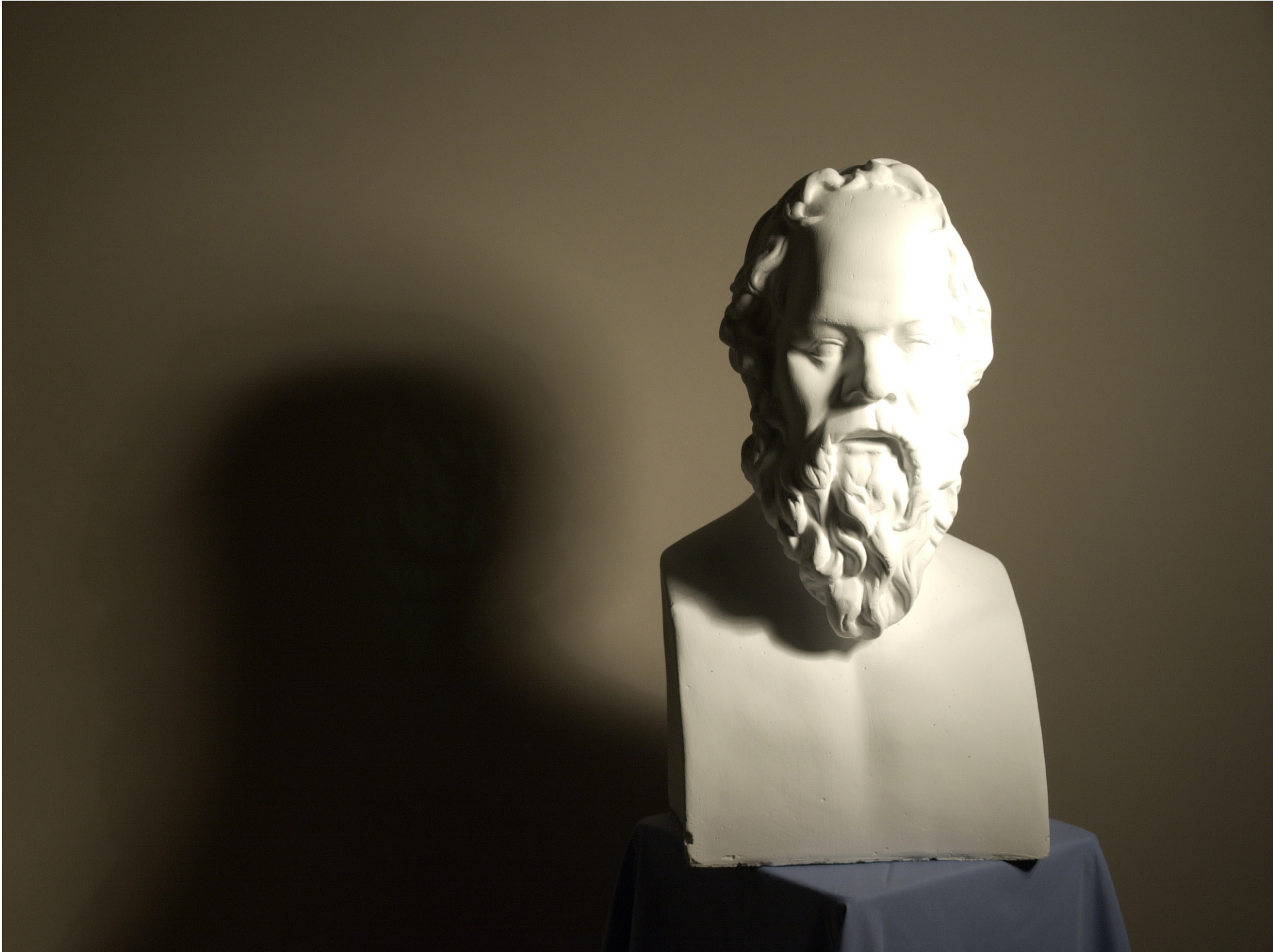




















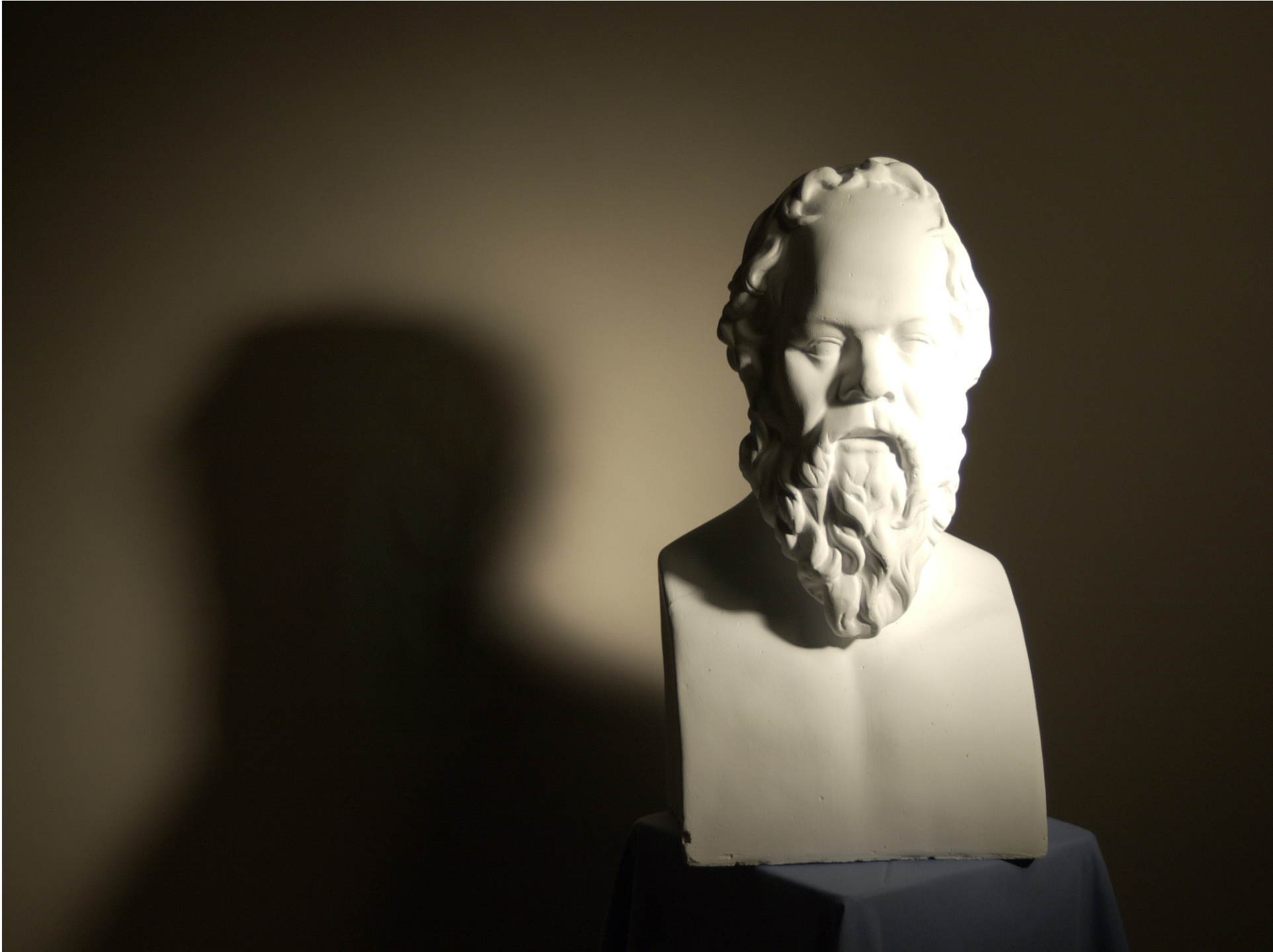












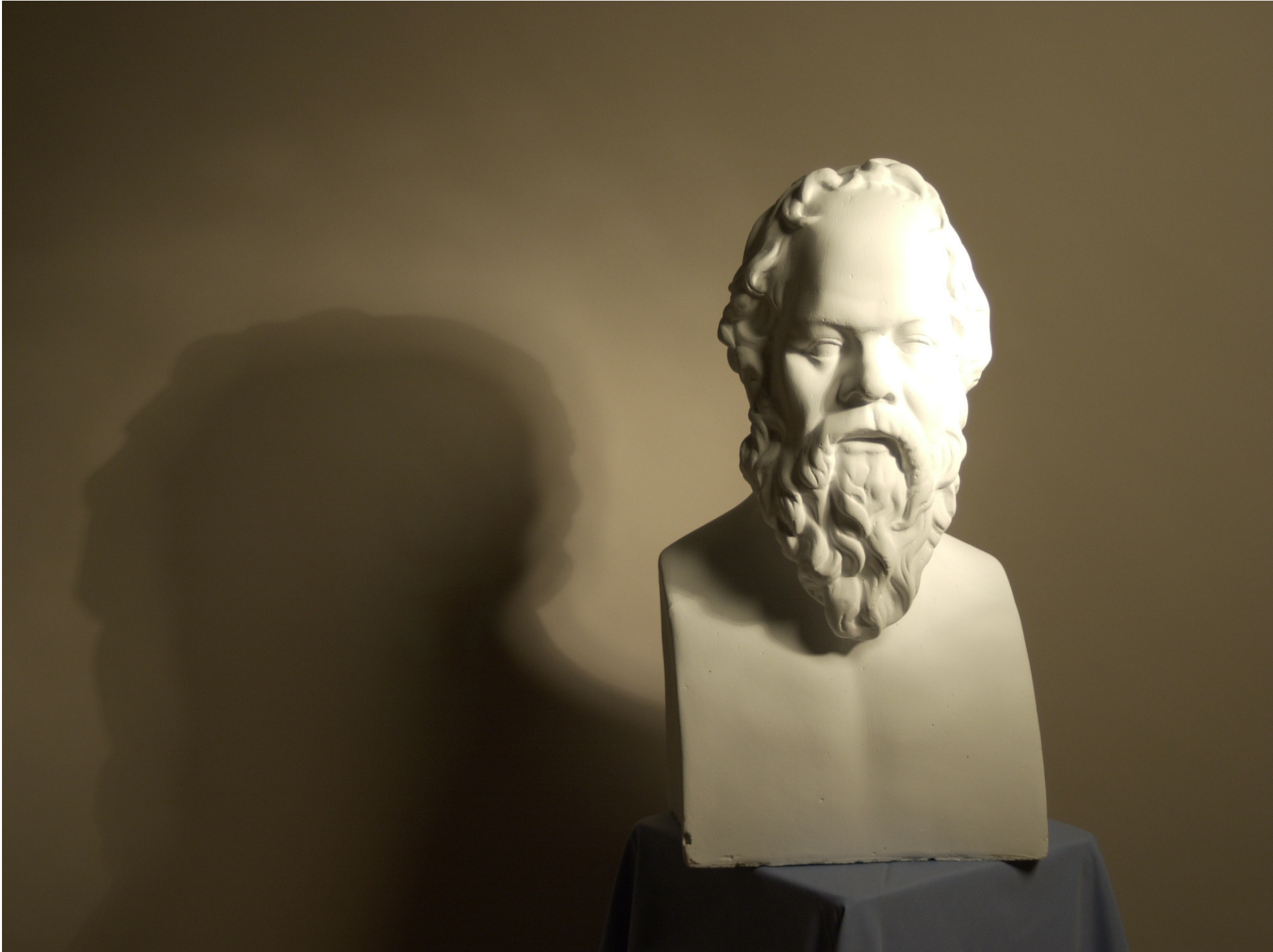




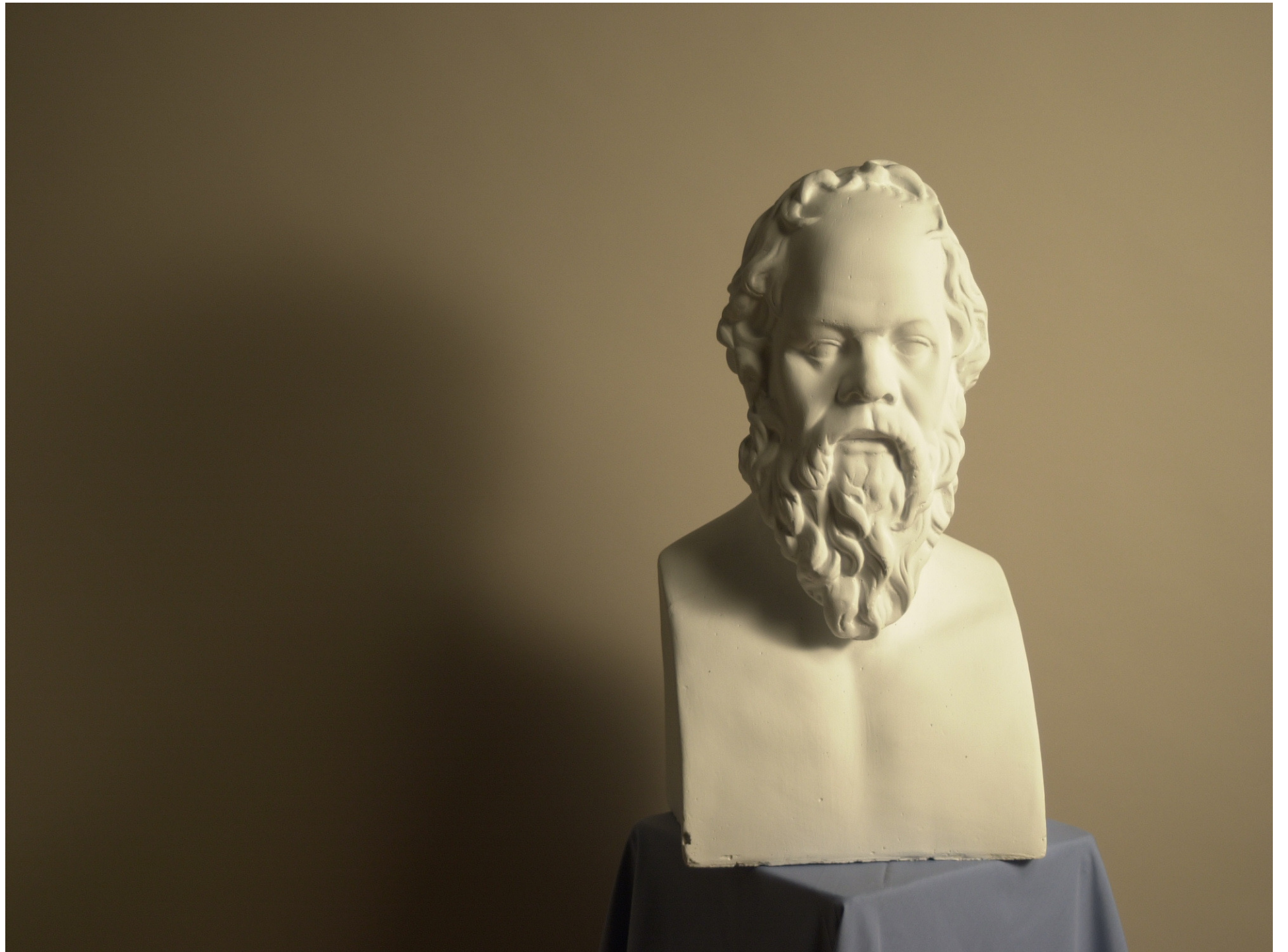




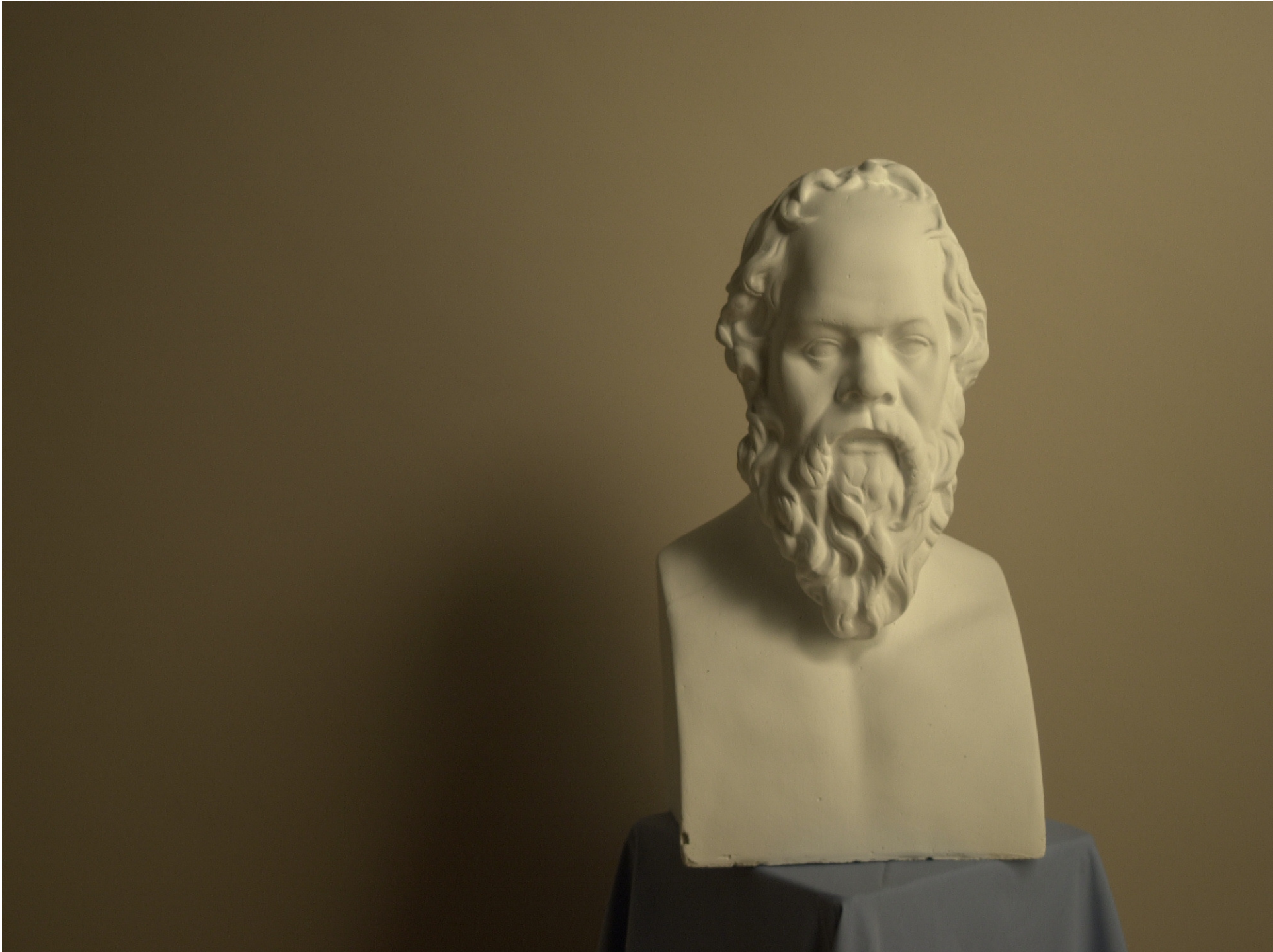










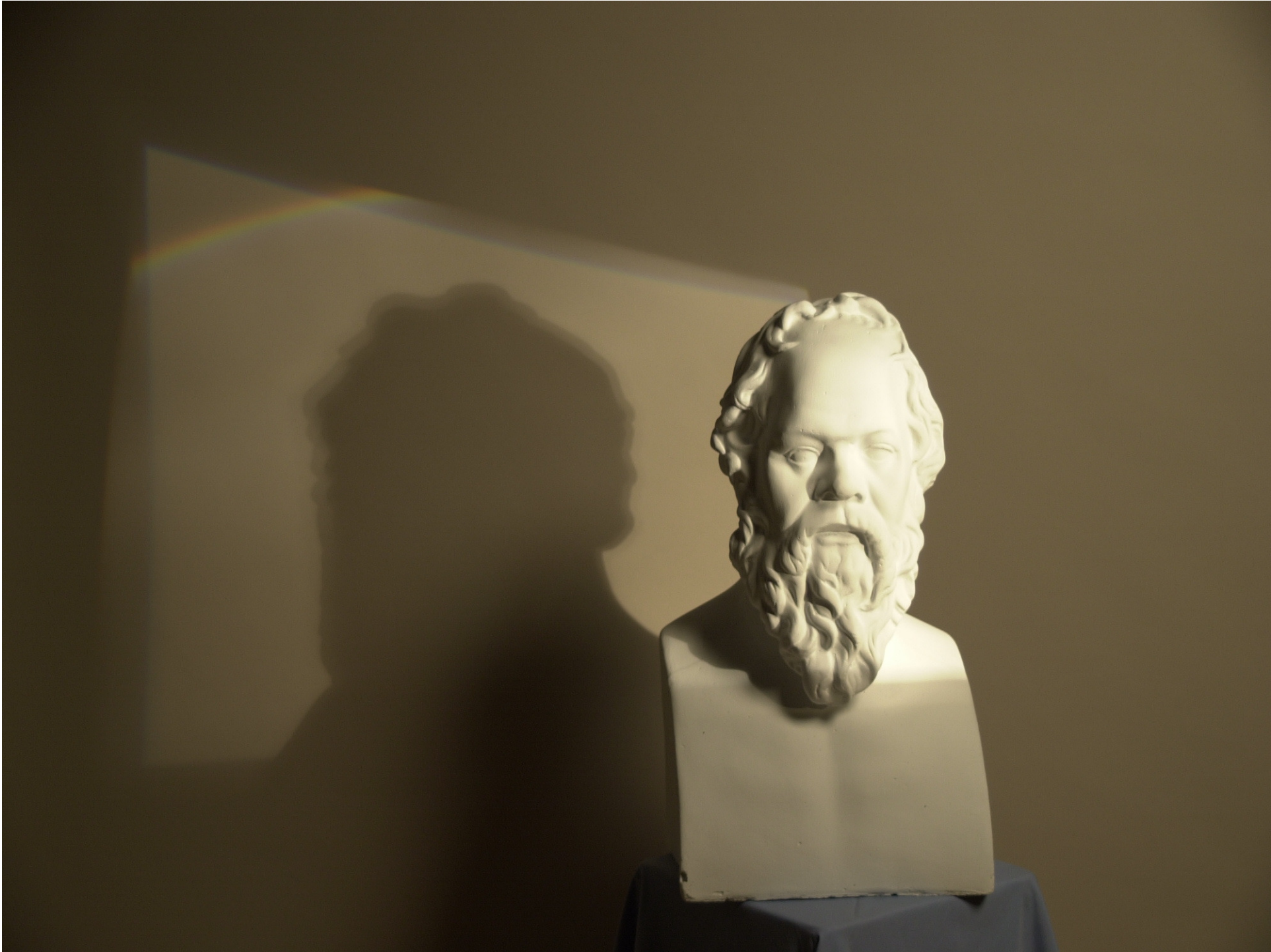












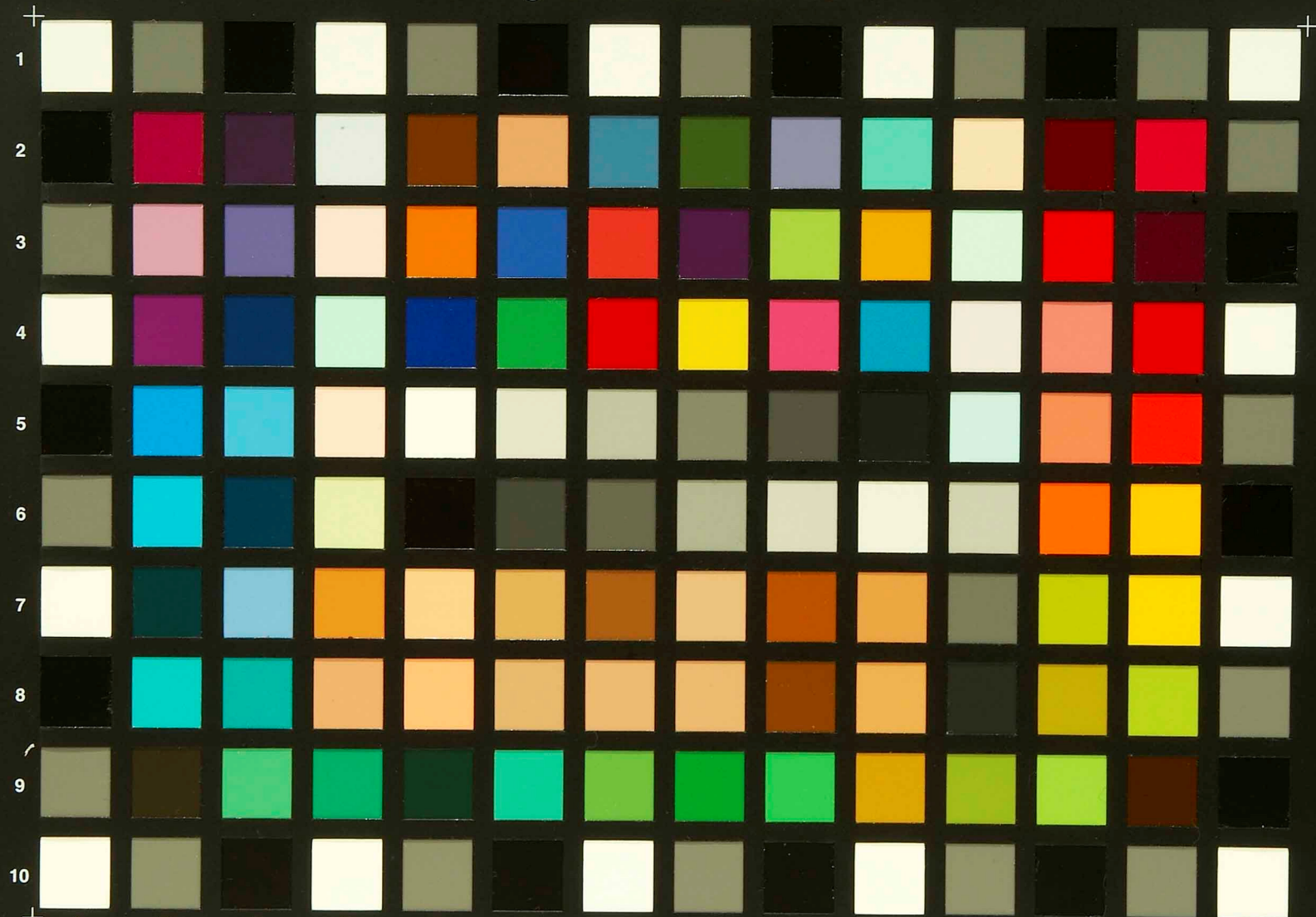
不同光質:產生出不同影像



色彩管理拍攝實例



Digital ColorChecker® SG



A B C D E F G H I J K L M N

gretagmacbeth

0 1 2 3 4 5 6 mm

5200K拍攝實例--1



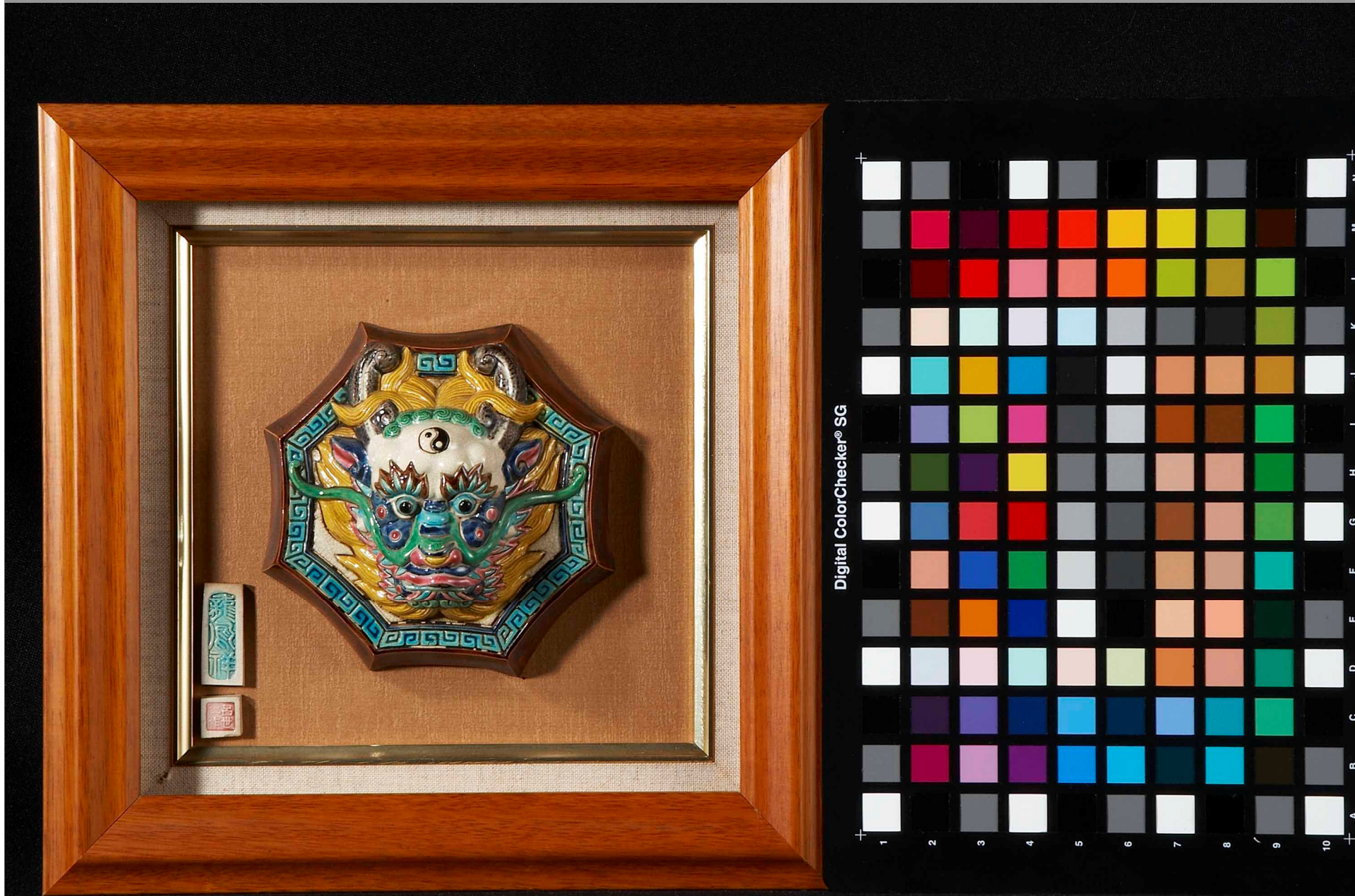
3200K拍攝實例--1



6500K拍攝實例--1



5200K拍攝實例--3



3200K拍攝實例--3



6500K拍攝實例--3



商品拍攝實例

